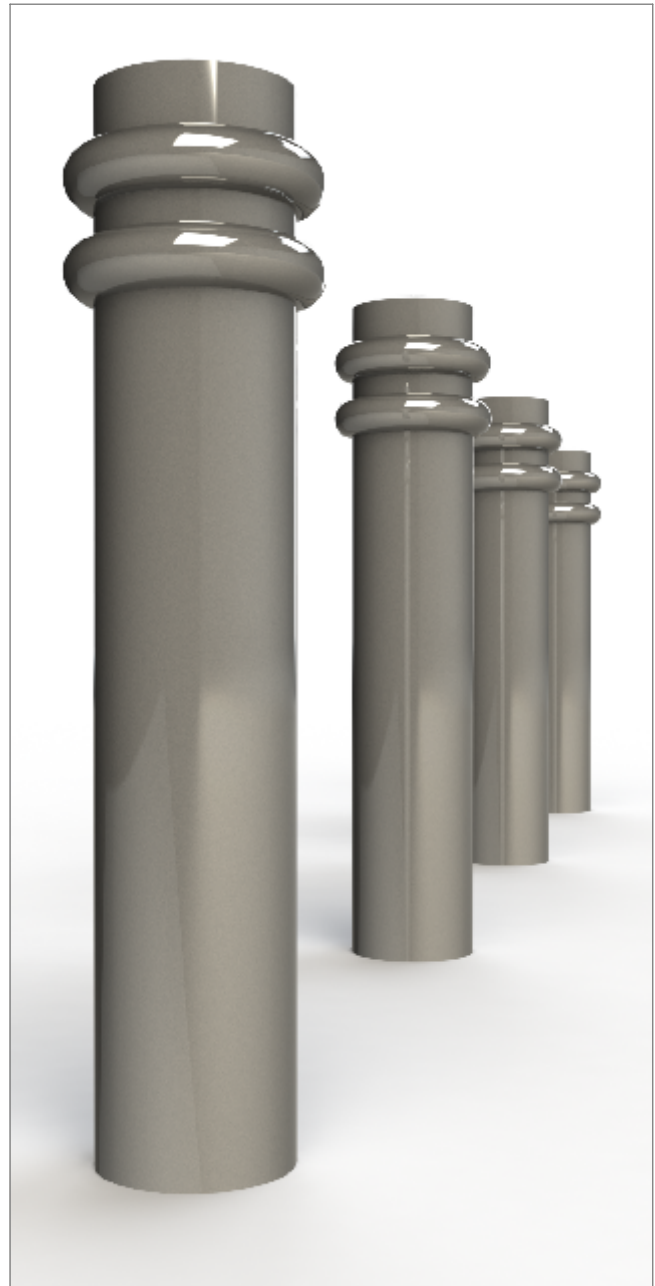


1:10



## Bollards | ASF 020 Steel Bollard

**Material:**

Manufactured in 275 carbon steel from recycled sources

**Diameter:**

Manufactured as standard in 114mm diameter. Also available in 76mm, 89mm, 101mm, 129mm, 168mm and 193mm diameters. Other sizes available if required

**Height:**

Bollards are manufactured either 1200mm long (900mm above ground) or 1500mm long (1000mm above ground) All other bollard sizes are available if required

**Standard Finish:**

As standard ASF Steel Bollards are finished hot dip galvanised

**Optional Finish:**

Bollards can be polyester powder coated, nylon coated or wet painted

**Ram Raid Options:**

Bollards can be manufactured with inner heavy duty steel inserts or with loose cap for concrete infill

**Visibility Bands:**

Retro reflective self-adhesive visibility bands can be applied. Wet painted and powder coated bands are also available

**Bespoke Options:**

Bollards can be manufactured to base plate fix, or be adapted to accept chains, rails or panels. Bollards can be made to be removable, or to fold down onto the ground or into a trough. Bollards can be adapted to make cycle stands, barriers etc. Door stoppers or door catches can be added.